



New South

BRANSON'S BEST QUARTET!



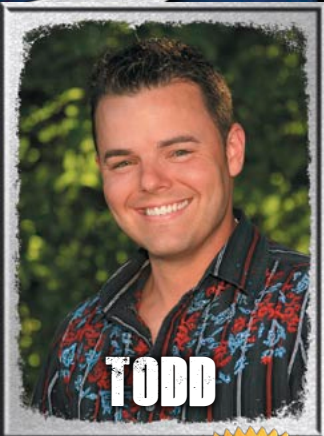
MIKE



JIM DANDY



JACKIE



TODD

GRAND COUNTRY
MUSIC HALL

GRAND JUBILEE

417-335-2484

GRANDCOUNTRY.COM





Voted *Best Variety Show*, audiences fall in love with the tight harmonies and dynamic performance of Branson's BEST Quartet, *New South!* From Country and hand-clapping Gospel, to decades of Rock & Roll favorites, the *Grand Jubilee* surpasses expectations of any age.

Comedy is abundant! *Jamie Haage*, as *Jim Dandy* and *Emcee*, *Mike Patrick*, will keep you absolutely doubled over in laughter. Along with power vocals from *Jackie Brown* and *Todd Bradshaw*, this show is a bomb with the fuse lit!

Having won "Branson's Best Variety Show", "Quartet of the Year", "Band of the Year", "Comedian of the Year", "Emcee of the Year", "Fiddle Player of the Year", "Bass Guitar Player of the Year", "Banjo Player of the Year", "Guitar Player of the Year", "Drummer of the Year" and "Steel Guitar Player of the Year", it's not hard to see why *Grand Jubilee* is the one show that will stay with you long after your vacation is over. It's Branson's most entertaining show... ask anybody!

GRAND JUBILEE

GRAND COUNTRY MUSIC HALL

417-335-2484
GRANDCOUNTRY.COM
 7:30 PM 9:00 PM

JANUARY							FEBRUARY							MARCH							APRIL						
S	M	T	W	T	F	S	S	M	T	W	T	F	S	S	M	T	W	T	F	S	S	M	T	W	T	F	S
1	2	3	4	5	6	7			1	2	3	4			1	2	3	1	2	3	4	5	6	7			
8	9	10	11	12	13	14	5	6	7	8	9	10	11	4	5	6	7	8	9	10	8	9	10	11	12	13	14
15	16	17	18	19	20	21	12	13	14	15	16	17	18	11	12	13	14	15	16	17	15	16	17	18	19	20	21
22	23	24	25	26	27	28	19	20	21	22	23	24	25	18	19	20	21	22	23	24	22	23	24	25	26	27	28
29	30	31					26	27	28	29				25	26	27	28	29	30	31	29	30					
MAY							JUNE							JULY							AUGUST						
S	M	T	W	T	F	S	S	M	T	W	T	F	S	S	M	T	W	T	F	S	S	M	T	W	T	F	S
		1	2	3	4	5					1	2	1	2	3	4	5	6	7			1	2	3	4		
6	7	8	9	10	11	12	3	4	5	6	7	8	9	8	9	10	11	12	13	14	5	6	7	8	9	10	11
13	14	15	16	17	18	19	10	11	12	13	14	15	16	15	16	17	18	19	20	21	12	13	14	15	16	17	18
20	21	22	23	24	25	26	17	18	19	20	21	22	23	22	23	24	25	26	27	28	19	20	21	22	23	24	25
27	28	29	30	31			24	25	26	27	28	29	30	29	30	31				26	27	28	29	30	31		
SEPTEMBER							OCTOBER							NOVEMBER							DECEMBER						
S	M	T	W	T	F	S	S	M	T	W	T	F	S	S	M	T	W	T	F	S	S	M	T	W	T	F	S
						1		1	2	3	4	5	6			1	2	3							1		
2	3	4	5	6	7	8	7	8	9	10	11	12	13	4	5	6	7	8	9	10	2	3	4	5	6	7	8
9	10	11	12	13	14	15	14	15	16	17	18	19	20	11	12	13	14	15	16	17	9	10	11	12	13	14	15
16	17	18	19	20	21	22	21	22	23	24	25	26	27	18	19	20	21	22	23	24	16	17	18	19	20	21	22
23	24	25	26	27	28	29	28	29	30	31				25	26	27	28	29	30	23	24	25	26	27	28	29	

Dates and Artists are subject to change.